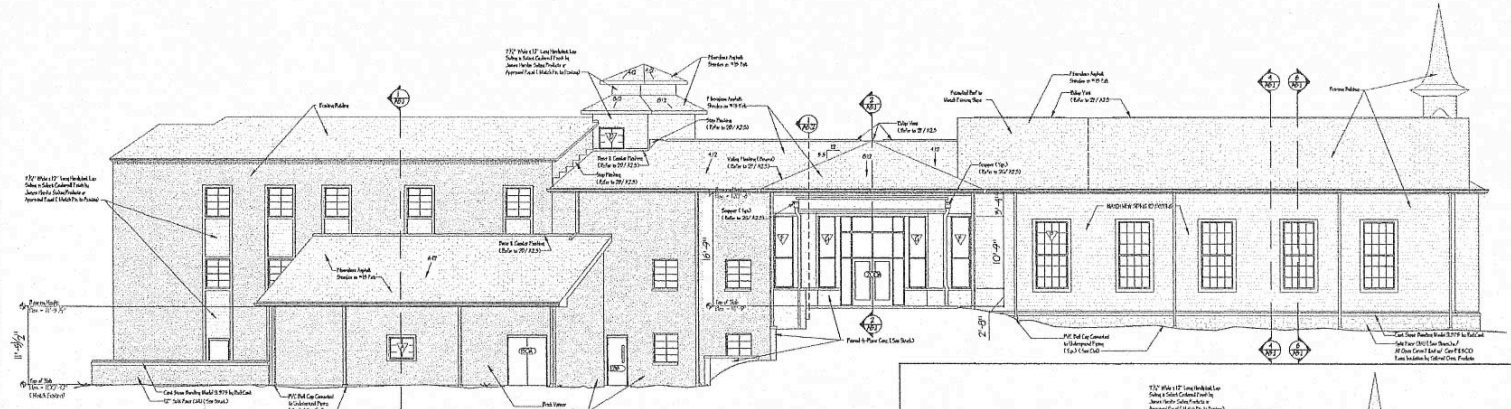
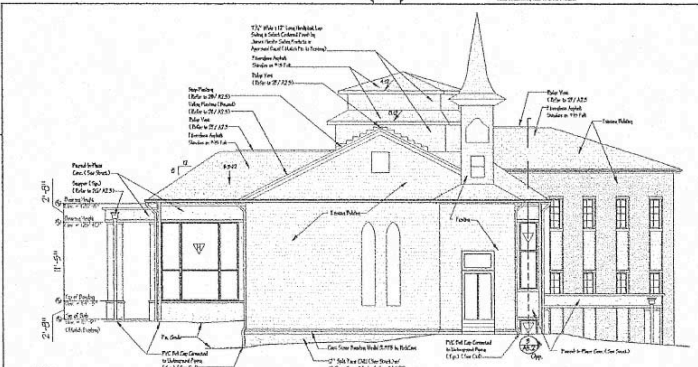


1 CHURCH STREET ELEVATION
Scale: 1/8" = 1'-0"



2 LAKE VIEW ELEVATION
Scale: 1/8" = 1'-0"



3 KENTUCKY STREET ELEVATION
Scale: 1/8" = 1'-0"

- EXTERIOR NOTES AND COLORS**
1. All New Exterior Frames and Sillings Shall be Prefinished Aluminum.
 2. Exterior Window Hill, Door and Frame Faces Shall be Finished in Color to be Selected by Architect and Approved by Owner.
 3. Exterior Window Frames Shall be Prefinished Aluminum. Refer to Window Notes and Specifications for Selection from Manufacturer's Standard.
 4. Provide Sealant at all Exposed Joints Between Exterior Materials.
 5. Shop Drawings Shall be Submitted to Architect for Approval at All Exterior Joints Prior to Orders and/or Fabrication.
 6. Provide Masonry Control Joints at All Designated Locations.
 7. Remove Existing Gutter and Downspouts and Provide New at Existing Locations.

PRELIMINARY

Foxhollow Goodson

Shelby County, Tennessee
A Professional Landmark Company
Specializing in Religious Architecture and Planning
1320 Popplemill Pointe Way • Knoxville, Tennessee 37999
Phone: (615) 251-5455 Fax: (615) 251-6655

A New Addition
for
Bethel Presbyterian
Church
Kingston, Tennessee

A4.1 Building Elevations

This Drawing and the Property of the Architect
Copyrighted and Not to be Copied, Reproduced or
Transmitted in any form or by any means
without the prior written permission of the Architect.

Date of Drawing: 2.2.07
Drawn by: LJA
Checked by: CA
Reviewed by: JG
Job Number: 16002

Revisions Issued:
1. Revisions & Comments
 Bidding or Pricing
 Code Review Only
 Construction

74